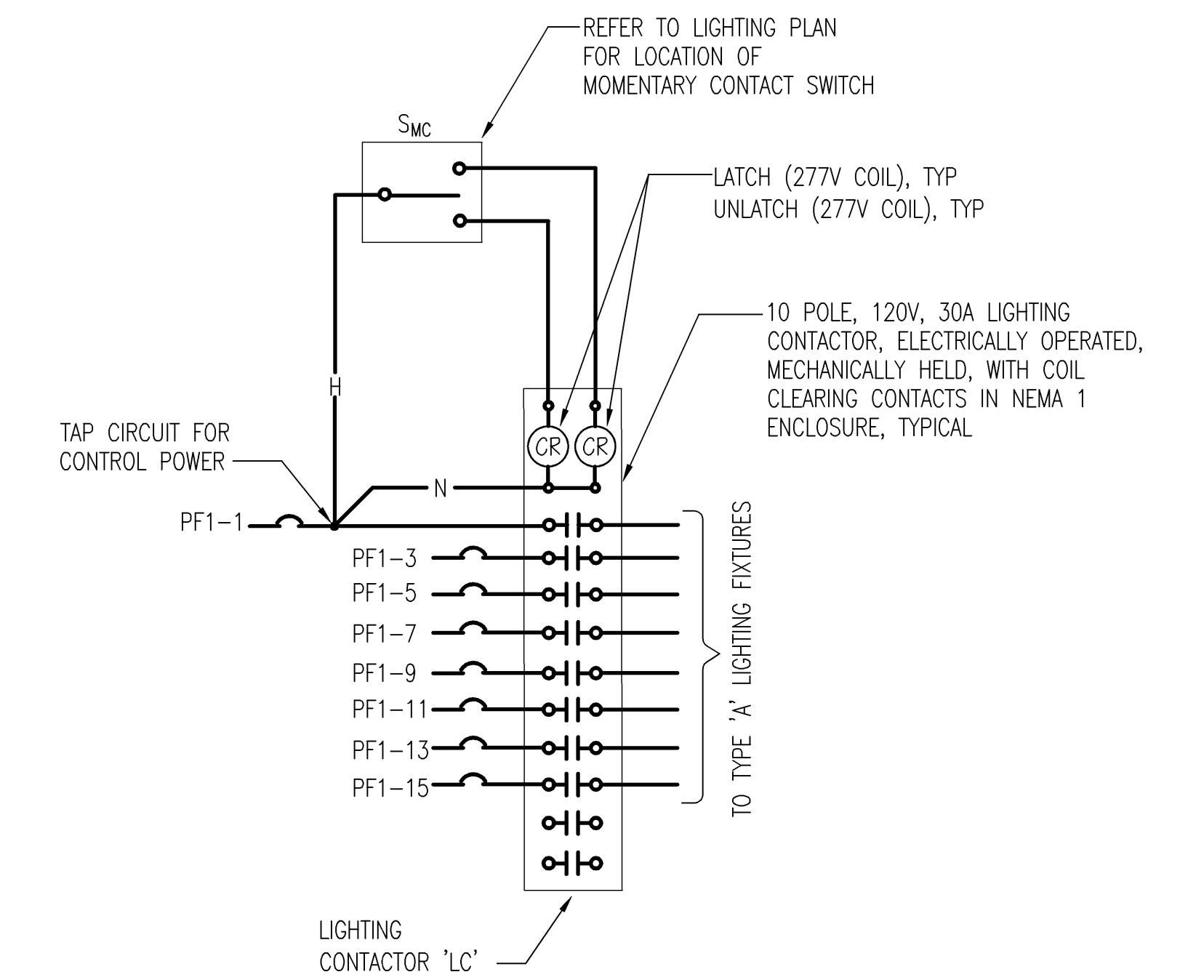


**NOTES THIS SHEET**

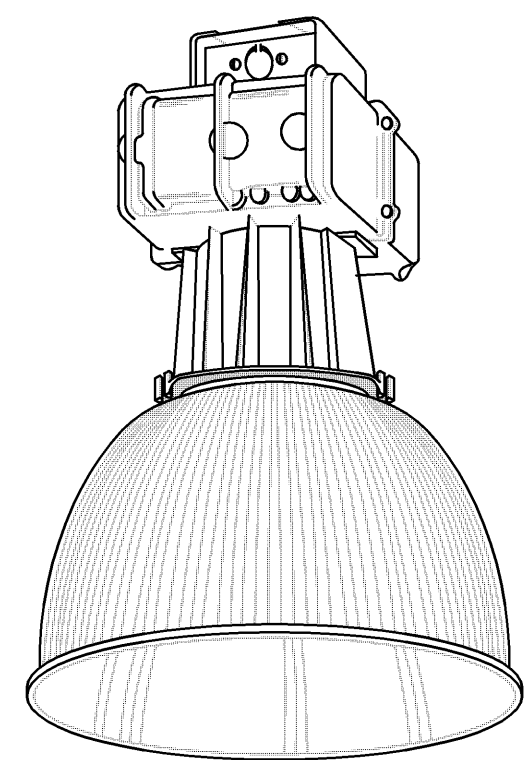
- 1 CIRCUIT VIA LIGHTING CONTACTOR, SEE LIGHTING CONTROL DIAGRAM, THIS SHEET.
- 2 FINAL INSTALLATION OF LIGHTING FIXTURES SHALL NOT OCCUR UNTIL ENTIRE EXPOSED CEILING HAS BEEN PAINTED BLACK.
- 3 PROVIDE 10' PICTAIL OF METAL CLAD CABLE FOR CONNECTION TO UNSWITCHED LIGHTING CIRCUIT SERVING THIS SPACE.



**LIGHTING CONTROL DIAGRAM**

NOT TO SCALE

**ELECTRICAL FLOOR PLAN - LIGHTING**  
SCALE: 3/32" = 1'-0"



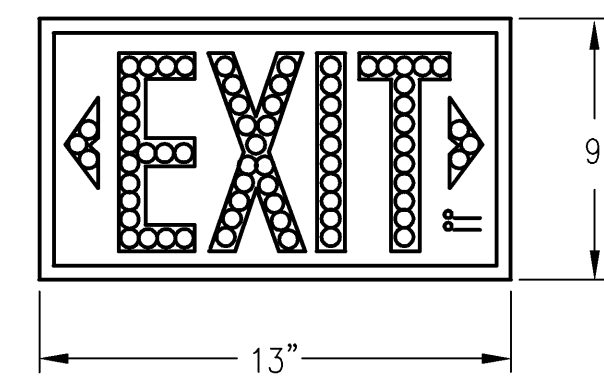
**LUMINAIRE REQUIREMENTS**

- 1. REFLECTOR: 22" CLEAR PRISMATIC.
- 2. BALLAST ENCLOSURE: CAST ALUMINUM
- 3. BALLAST: ELECTRONIC, HIGH POWER FACTOR
- 4. PROVIDE HOOK ASSEMBLY AT EACH FIXTURE.
- 5. PROVIDE SAFETY CHAIN FOR BALLAST AND REFRACTOR.

DETAIL BASED ON US LIGHTING TECH, "RIDGELINE HIGHBAY" SERIES

TYPE	LAMP #	LAMP TYPE	INPUT WATTS	VOLTS	MOUNTING
△	1	200W INDUCTION	212	120/277	PENDANT/CEILING, 17'-0" AFF

**HIGH-BAY INDUCTION FLUORESCENT FIXTURE**



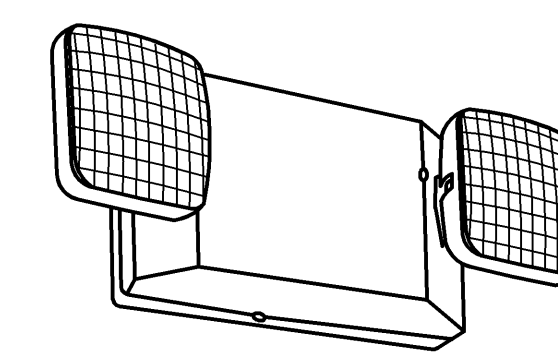
**LUMINAIRE REQUIREMENTS**

- 1. UV STABLE THERMOPLASTIC HOUSING AND LETTERS.
- 2. 6 INCH TALL LETTERS.
- 3. RED ILLUMINATION PROVIDED BY LIGHT EMITTING DIODES (LED). APPROXIMATELY 100 LED'S PER FACE.
- 4. POWER FAILURE PROTECTION, BROWN OUT PROTECTION AND SURGE PROTECTION.
- 5. SEALED MAINTENANCE FREE NICKEL CADMIUM BATTERY WITH SOLID STATE CHARGER, WITH OVERCHARGE PROTECTION.
- 6. UNIVERSAL ARROWS AND BLANK OFF PLATES.
- 7. SINGLE OR DOUBLE FACE AS INDICATED.
- 8. UNIVERSAL MOUNTING.
- 9. TEST BUTTON IN BOTTOM OF HOUSING.
- 10. INDICATOR LIGHTS TO INDICATE WHEN UNIT IS ON NORMAL POWER OR ON BATTERY POWER.
- 11. WHITE FINISH.

■ INDICATES WALL MOUNT 6" ABOVE DOOR TO BOTTOM OF FIXTURE  
DETAIL IS BASED ON DUAL-LITE, "CV3" SERIES

TYPE	LAMP TYPE	INPUT WATTS	VOLTS	MOUNTING
■	LED	5	120	UNIVERSAL MOUNT, CEILING, WALL

**EXIT LIGHT**



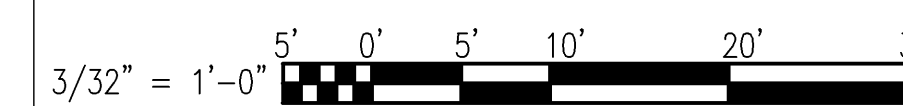
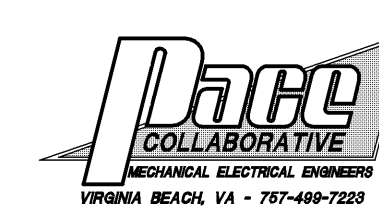
**LUMINAIRE REQUIREMENTS**

- 1. HOUSING SHALL BE IMPACT RESISTANT, SCRATCH RESISTANT, UV STABLE, THERMOPLASTIC.
- 2. LENS SHALL BE HIGH IMPACT POLYCARBONATE WITH SWIVEL MOUNTING FOR FULL RANGE OF LAMP HEAD ADJUSTMENT.
- 3. HALOGEN LAMPS SHALL BE RATED 12 WATTS EACH.
- 4. BATTERY SHALL BE SEALED, MAINTENANCE-FREE WITH POWER CAPACITY FULLY RATED IN ACCORDANCE WITH THE NEC AND NFPA 101. BATTERY VOLTAGE RATING SHALL BE 6 VOLTS OR 12 VOLTS. PROVIDE AUTOMATIC VOLTAGE DISCONNECT FEATURE FOR DEEP DISCHARGE PROTECTION.
- 5. CHARGER SHALL BE ELECTRONIC, AUTOMATIC, CURRENT LIMITING WITH SHORT CIRCUIT PROTECTION, THERMAL PROTECTION, A RED LED PILOT LAMP, AND A TEST SWITCH. PROVIDE CHARGER WITH A FILTERED OUTPUT AND OPERATIONAL FEATURES THAT MAXIMIZE THE LIFE AND OPERATION OF THE BATTERY.

DETAIL BASED ON COOPER, "CC7" SERIES

TYPE	LAMP #	LAMP TYPE	INPUT WATTS	VOLTS	MOUNTING
☞	2	HALOGEN	3	120/277	SURFACE WALL, MOUNT 9'-0" AFF, APPROVE FINAL HEIGHT WITH OWNER/ARCHITECT

**EMERGENCY BATTERY UNIT**



3/32" = 1'-0"

# LIGHTING PLAN

## PROPOSED HEALTH CLUB

5813 WEST NORFOLK ROAD  
PORTSMOUTH, VIRGINIA 23703-3324

**ARCHITECT:**  
RANDOLPH T. HICKS, AIA  
131 HANBURY ROAD, SUITE D  
CHESAPEAKE, VIRGINIA 23322  
PHONE: (757) 288-9354  
FAX: (757) 366-9420  
EMAIL: RandolphTH@aol.com

**ISSUED FOR:**  
PRICING/CONSTRUCTION

**DATE:**  
04-28-10

E2