

AMENDMENT OF SOLICITATION/MODIFICATION OF CONTRACT			1. CONTRACT ID CODE J	PAGE OF PAGES 1 2
2. AMENDMENT/MODIFICATION NO. 0002	3. EFFECTIVE DATE 10-Dec-2009	4. REQUISITION/PURCHASE REQ. NO. W26GLG93084944		5. PROJECT NO.(If applicable)
6. ISSUED BY USA ENGINEER DISTRICT, NORFOLK CONTRACTING OFFICE 803 FRONT STREET NORFOLK VA 23510-1096	CODE W91236	7. ADMINISTERED BY (If other than item 6) See Item 6		
8. NAME AND ADDRESS OF CONTRACTOR (No., Street, County, State and Zip Code)		X	9A. AMENDMENT OF SOLICITATION NO. W91236-10-B-0007	
		X	9B. DATED (SEE ITEM 11) 20-Nov-2009	
			10A. MOD. OF CONTRACT/ORDER NO.	
			10B. DATED (SEE ITEM 13)	
CODE	FACILITY CODE			
11. THIS ITEM ONLY APPLIES TO AMENDMENTS OF SOLICITATIONS				
<input checked="" type="checkbox"/> The above numbered solicitation is amended as set forth in Item 14. The hour and date specified for receipt of Offer <input checked="" type="checkbox"/> is extended, <input type="checkbox"/> is not extended. Offer must acknowledge receipt of this amendment prior to the hour and date specified in the solicitation or as amended by one of the following methods: (a) By completing Items 8 and 15, and returning _____ copies of the amendment; (b) By acknowledging receipt of this amendment on each copy of the offer submitted; or (c) By separate letter or telegram which includes a reference to the solicitation and amendment numbers. FAILURE OF YOUR ACKNOWLEDGMENT TO BE RECEIVED AT THE PLACE DESIGNATED FOR THE RECEIPT OF OFFERS PRIOR TO THE HOUR AND DATE SPECIFIED MAY RESULT IN REJECTION OF YOUR OFFER. If by virtue of this amendment you desire to change an offer already submitted, such change may be made by telegram or letter, provided each telegram or letter makes reference to the solicitation and this amendment, and is received prior to the opening hour and date specified.				
12. ACCOUNTING AND APPROPRIATION DATA (If required)				
13. THIS ITEM APPLIES ONLY TO MODIFICATIONS OF CONTRACTS/ORDERS. IT MODIFIES THE CONTRACT/ORDER NO. AS DESCRIBED IN ITEM 14.				
A. THIS CHANGE ORDER IS ISSUED PURSUANT TO: (Specify authority) THE CHANGES SET FORTH IN ITEM 14 ARE MADE IN THE CONTRACT ORDER NO. IN ITEM 10A.				
B. THE ABOVE NUMBERED CONTRACT/ORDER IS MODIFIED TO REFLECT THE ADMINISTRATIVE CHANGES (such as changes in paying office, appropriation date, etc.) SET FORTH IN ITEM 14, PURSUANT TO THE AUTHORITY OF FAR 43.103(B).				
C. THIS SUPPLEMENTAL AGREEMENT IS ENTERED INTO PURSUANT TO AUTHORITY OF:				
D. OTHER (Specify type of modification and authority)				
E. IMPORTANT: Contractor <input type="checkbox"/> is not, <input type="checkbox"/> is required to sign this document and return _____ copies to the issuing office.				
14. DESCRIPTION OF AMENDMENT/MODIFICATION (Organized by UCF section headings, including solicitation/contract subject matter where feasible.) Amendment 0002 is hereby issued to conduct a 2nd site visit. See continuation sheet.				
Except as provided herein, all terms and conditions of the document referenced in Item 9A or 10A, as heretofore changed, remains unchanged and in full force and effect.				
15A. NAME AND TITLE OF SIGNER (Type or print)		16A. NAME AND TITLE OF CONTRACTING OFFICER (Type or print)		
		TEL: _____ EMAIL: _____		
15B. CONTRACTOR/OFFEROR _____ (Signature of person authorized to sign)	15C. DATE SIGNED	16B. UNITED STATES OF AMERICA BY _____ (Signature of Contracting Officer)	16C. DATE SIGNED 10-Dec-2009	

SECTION SF 30 BLOCK 14 CONTINUATION PAGE

The following items are applicable to this modification:

SECTION 00 21 00 - INSTRUCTIONS, CONDITIONS & NOTICES TO OFFERORS

1. The second site visit will be held on Tuesday, 15 December 2009. People will be escorted through the building in groups of 12 participants starting at 10:00, 11:00, 13:00, and 14:00. Interested Vendors seeking to attend the site visit are required to email Sabrina Tippins at Sabrina.a.tippins@usace.army.mil with preferred time slot and name of attendees. A confirmation email will be sent to each interested vendor with an assigned slot. Interested parties will muster at the TRADOC Construction Trailer, Bldg 1560, 11th and Jackson St., Ft Eustis, VA 23604 at the assigned time, complete the sign in sheet, and proceed to Building 661.
 - a. This visit is to see parts of the building that provide a general view of the building condition and existing features. The entire building will not be accessible. Statements by escorts, building occupants, Government employees, Military Officers, or others do not constitute part of the contract. See the contract documents for the definition of work required.
 - b. No electronic recording devices of any kind will be admitted. Leave electronic devices secured at another location before you arrive. No recording of any kind will be permitted. Prohibited recording includes, but is not limited to: voice, other sound, visual images, or electronic signals. Violation of security regulations can result in civil and criminal penalties.
 - c. Pen or pencil and paper are permitted for noting questions to be asked.
 - d. Potential contractors, suppliers and subcontractors of any tier are allowed.
2. Questions will be accepted at www.projnet.org until 12/25/2009.
3. Bid due date is hereby extended from 12/21/2009 at 2:00 pm to ~~01/05/2009 at 3:00pm~~ 01/05/2010 at 2:00pm.
4. Incorporate Attachment A regarding furniture.

TRADOC BUILDING 661 – SYSTEMS FURNISHINGS SPECIFICATIONS

TECHNICAL SPECIFICATIONS AND PANEL SYSTEM SPECIFICATION REQUIREMENTS

GENERAL

Furniture system shall be of frame-and-tile construction for all panels, and will include all necessary display, storage, and work surfaces as described in the following specifications.

Manufacturer shall have a “non-obsolescence” policy ensuring that like product coordinating in color, appearance, and function shall be available for the lifetime of the product.

Build mockups for approval by USACE typical workstation (one complete unit of each) to verify selections made under sample submittals. Mockups shall demonstrate aesthetic effects and set quality standards for fabrication and installation. Approved mockups may become part of the completed work if undisturbed at time of Substantial Completion.

All products and components are to be sourced from a single manufacturer, with no substitutions.

Proposed products are to conform to all of the following specifications. The sizes, dimensions, shapes, materials and type of construction, finishes, colors and other descriptions provided with each article are the salient characteristics the Government will use to determine whether other products are equal.

SALIENT CHARACTERISTICS OF PANEL SYSTEM

Panel Frames

Overall thickness of frames with tiles to be 3” maximum.

The interior framework of the walls must be made from roll-formed, 16-gauge min. tubular steel stiles and 15-gauge min. tubular top and bottom rails, with fully-welded junctions. Frames will be available in heights of (+/-4”) 35”, 46”, and 68”. Frames will be available in widths of 24”, 30”, 36”, 42” and 48”.

The framework must be stackable in increments of 11” (+/-4”), up to 68” (+/-4”) with a panel base of 36” (+/- 2”) below stacking panels. Stacking frames must be able to support hanging components without balancing weight on both sides of the frame.

All frames within the system must have the same construction, regardless of the surface types or segmentation. The framework inside a monolithic panel must be the same as a segmented panel.

All connections between frames must be metal-to-metal and must be self-aligning as connections are made.

The system must be capable of “step-down” walls of varying heights in a run.

The framework must support hanging components in 1” vertical increments.

Frames must have adjustable glides with a leveling range of 1-1/2” min.

Stacking frames must not require additional bracing, or rigidizers, between frame intersections to maintain proper support.

ATTACHMENT A

The structure must include self-aligning connectors that provide 2-way, 3-way or 4-way frame connections.

Frames must be available with an open base, option that provides at least 3" of space below the tiles and the floor.

An elevated-style panel must have ability to be retrofitted with base covers and visa versa at the client's location.

Structural wall strips must be available for attaching system components to building walls. Wall strips must be qualified to support fully cantilevered worksurfaces.

The system must meet or exceed all standards for systems furniture as published by the Business and Institutional Furniture Manufacturers Association (BIFMA) and the American National Standards Institute (ANSI). The system must be UL-listed.

Panel Skins

All frame surfaces must be of a Fabric Grade 3 (manufacturer must demonstrate that Fabric Grades 1 and 2 are standard options offered for their product). They must be removable, replaceable and interchangeable without the use of tools.

Frames must not require additional brackets to accept surface tiles.

Surface modules must be available in the following types: Tackable fabric, painted steel, window, marker, rail tool supporting, and textured steel.

Exterior surfaces must be changeable without extensive downtime and without disruption to adjoining workstations.

Each frame in the system must allow for different surface types and segmentation on each side of a wall.

Surface tiles must be shipped fully assembled and must not require field assembly of clips or brackets before attaching the tiles to the framework. The surfaces must attach directly to the frame without the use of tools.

The system must include wallstrips that allow for the replaceable surface modules to attach to conventional drywall.

Base covers must be available without power and data cutouts or knockouts for a clean aesthetic.

Panel top caps and end trims shall be painted steel.

Electrical and Data

Four-circuit, eight-wire power must be available at the base and beltline, and at vertical increments of 11". The framework must support contiguous, horizontal energy distribution at six different levels. Typical in document must have all power & data located at beltline- no base power.

The system's eight-wire power must consist of four 12-gauge line conductors, two 10-gauge neutral conductors, one system ground conductor, and one isolated ground conductor. The system must have the capability to be installed in the following configurations:

ATTACHMENT A

- Three 20-amp circuits utilizing a common neutral and system ground, and a fourth, dedicated 20-amp circuit utilizing separate line, neutral, and ground conductors.
- Two 20-amp circuits utilizing a common neutral and system ground, and two 20-amp isolated ground circuits using the second 10-gauge neutral and isolated ground conductor
- One 20-amp circuit utilizing a neutral and system ground, and three 20-amp isolated ground circuits utilizing the second 10-gauge neutral and isolated ground conductor

Baseline and beltline power modules/harnesses on every standard frame must be retrofittable in the field without dismantling the system.

Power modules/harnesses must be non-handed and must not require the use of tools or fasteners for assembly

A power harness must be capable of mounting at various levels within the frame.

The system must allow for horizontal lay-in cabling within 12" of the finish floor and under the frame top caps.

Base cabling must be accessed easily by hinged base covers or easily removable panel skins.

The top-of-frame lay-in cable channel must be a standard feature of the system and provide contiguous horizontal routing of cables throughout a workstation cluster without field modification of the channel.

System frame must hold at least 60 category 5, 4 pair UTP cables in its base, and 30 cables in its top channel and 30 cables every 11 inches (+/- 4") of the frame's height.

The system must be able to separate data and telecommunications cables at 11 inch increments (+/- 4") vertically in a range from 11 to 68 inches.

The system must include a floor data entry option that enters directly from the underside of a frame without entering the face of a base cover or tile.

Work Surfaces and Tools

The system should offer a curvilinear primary work surface shape, so the user can sit with technology towards the workstation interior.

The system should offer work surfaces in edge options of squared, bullnose, and contoured edge.

The system shall offer open end return panels that support the end of the worksurfaces and are aesthetically pleasing.

The system must include machine support trays (paper-vertical-and diagonal), tilting keyboard trays with palm rest, articulating keyboards, mobile CPU holder.

The system must provide a wide range of organizing tools and accessories to allow for customization of individual workstations.

The system must provide grommets or a gap at the rear of the work surface for routing cables from the work surface.

ATTACHMENT A

Overhead Storage

Overhead storage units must accommodate standard 3-ring binders in the open and closed positions. They must be available in widths from 24 to 48 inches in six-inch increments, and in 60 inches wide.

Overhead storage units must be veneer or textured painted finishes. Overheads must be available with a lockable sliding door, or a lockable flipper style overhead storage door which operates in such a way that it remains stable in an open position with minimal risk of accidental closure. Flipper style doors must recess back into the interior of the compartment when open.

Overhead storage cabinets, lateral files, and pedestal drawers must be keyed-alike within each workstation.

Open shelves must be available in widths from 24 to 48 inches in six-inch increments, and 60 inches wide.

Lighting

The system should offer a variety of task lighting options both general and energy-efficient.

The system must be available with a task light that mounts directly to the frame and offers uniform illumination over the work surface in the form of a fluorescent light fixture normally mounted under a storage cabinet.

Task lighting must be available in colors to compatible with painted surfaces of the system.

Task lighting must be available as standard with a 9-foot power cord.

Task lighting must be available to match overhead shelf widths.

Storage components

Construction

Exterior case shall be a minimum of 22 gauge steel.

Unit cases shall enclose all sides, with no open backs.

The internal frame will consist of 4 vertical members and corner reinforcements, all spot welded to exterior case.

Interior vertical members shall be 20 gauge steel.

Drawer will be of a minimum of 20 gauge steel with 14 gauge steel ball bearing slides.

Drawer fronts shall have a full-width integral pull.

Lateral Files

Lateral files will be available in a minimum of 2 drawer configurations with a minimum of 22 gauge steel top.

Laterals will offer a minimum of 3 widths (30, 36, 42) and 1 depth (18"-20").

Laterals will provide a minimum of 2 drawer types. (Hanging file & pull out shelf with flipper)

Laterals will offer locks and counterweights as options.

ATTACHMENT A

Laterals will provide interior drawer accessories, front to back filing rail, file drawer organizer, movable dividers, and side to side filing rail.

Pedestals

Pedestals will offer a minimum of 3 drawer types configured within each case using the following: box, file, and personal drawers.

Pedestals will provide the following: accessories, locks, counterweight, utility tray, file converter, compressor, file drawer organizer.

Worksurface-mounted, freestanding, support, and mobile pedestals shall be available. Pedestal depths shall be available to accommodate all work surface depths.

Pedestals shall be non-handed.

Locks

Locks shall have a removable lock core.

Locks within each station shall be keyed alike. Workstations as a whole shall be randomly keyed.

Locks will be master keyed.

Lockbar must be 18-gauge min. steel.

Finishes

Finish coat shall be baked enamel or electrostatic-applied epoxy powder coat with a range of color. Gloss level shall not exceed .50.

Color selection shall include custom match, non-metallic, textured, and non-white paints.

Exposed painted surfaces will be textured finish to hide fingerprints, etc.

Warranty

The system must be backed by a Lifetime warranty, labor included, with minimal limitations or exclusions for individual components or the number of shifts they are used. Please list any limitations or exclusions.

Textiles will be covered for defects in application and workmanship for the same period as the rest of the system.

Manufacturer will provide comprehensive statement of warranty, including all limitations or exclusions.

Environmental

Products shall be Greenguard certified.

Frames must be 100 percent recyclable steel. All trim, supports, and storage components shall be powder coated. System must be easily separated for recycling.

ATTACHMENT A

TRADOC BUILDING 661 – ARTWORK

TECHNICAL SPECIFICATION REQUIREMENTS

GENERAL

This specification sheet outlines the requirements for bidding on the art package for the TRADOC Building 661 facility.

Proposed products are to conform to all of the following specifications. The sizes, dimensions, shapes, materials of construction, finishes, colors and other descriptions provided with each article are the salient characteristics the Government will use to determine whether other products are equal.

SALIENT CHARACTERISTICS

Size

- Between 22" x 28" and 30" x 40" glass size – smaller pictures should only be used if you are including them as part of a "grouping" for a single location.

Matting

- Double mats, bevel cut, regular paper mat board from brand company such as Crescent, Bainbridge or approved equal – outer mat 2-3/4" wide, inner mat 1/4" wide. Cover all writing on posters.

Mounting

- All prints should be wet mounted, dry mounted or otherwise attached to 1/4" white foam board to prevent rippling due to humidity changes and to ensure staying in place over time.

Facing

- High-quality gallery-grade plexiglass, .080 inches thickness.

Backing

- Full size brown or black dust cover to seal against moisture.

Labeling

- Provide label on back of each picture listing artist, title, final size and SKU number, as well as location for placement based on floor plans.

Hanging

- AMS-type security systems – pre-installed on artwork with remaining wall hardware to be installed on wall during installation.

Installation

- Successful bidder to include a price for installation in facility using the above AMS 3-point hang security hardware as well as placement and clean-up of debris. Please provide a separate line item for installation costs.

Frame

- 2" wide maple hardwood moulding. Profile and finish to be selected by USACE, Norfolk District.

ATTACHMENT A

Warranty

- 2-year warranty on artwork, including all component parts. This will not include fading due to direct sunlight and/or other environmental conditions not within your control.

Type of Artwork

- Patriotic and regional themes applicable to the Commonwealth of Virginia. Final selections to be made by USACE, Norfolk District.
- Quality of art prints will be standard high-grade posters and prints from major publishers such as Bruce McGaw Graphics, New York Graphic Society, Editions Limited, Winn-Devon (Encore) Art, Bentley Publishing, or approved equal.

Location

- Common and public spaces including lobby and corridors.

TRADOC BUILDING 661 – PRIVATE OFFICE AND CONFERENCE ROOM CASEGOODS SPECIFICATIONS

TECHNICAL SPECIFICATION REQUIREMENTS

GENERAL

Build mockup for approval by USACE typical private office (one complete unit) to verify selections made under sample submittals. Mockup shall demonstrate aesthetic effects and set quality standards for fabrication and installation. Approved mockup may become part of the completed work if undisturbed at time of Substantial Completion.

Finishes for all items will match regardless of manufacturer. Products and components are to be sourced from a single manufacturer and one series, with no substitutions.

Proposed products are to conform to all of the following specifications. The sizes, dimensions, shapes, materials of construction, finishes, colors and other descriptions provided with each article are the salient characteristics the Government will use to determine whether other products are equal.

SALIENT CHARACTERISTICS

Finishes

- Exposed surfaces shall be hardwood and/or hardwood veneer. Back panels shall be fully finished. Minimum of 5 wood finish options.
- Undersurface and interior storage finish options to include hardwood, hardwood veneer, laminate, woodgrain vinyl wrap, and metal.
- Door storage finish options to include hardwood, hardwood veneer, glass/wood, and glass/metal.
- Pull options to include multiple styles (4 minimum) and finishes (4 minimum).
- Transaction surfaces for item 806 to be natural stone.
- Upholstered tackboards to be Grade 3 fabric (manufacturer must demonstrate that Fabric Grades 1 and 2 are standard options offered for their product).

Components

- Series available assembled or as components.
- Components to meet or exceed ANSI/BIFMA X5.5-2008 Desk/Table Products Test and X5.9-2004 Storage Units Test Functional and Proof loading requirements.
- Worksurfaces sized on 6" increments.
- Hinged modesty panel available as an option.
- Wire management on pedestal ends for wire routing.

Construction

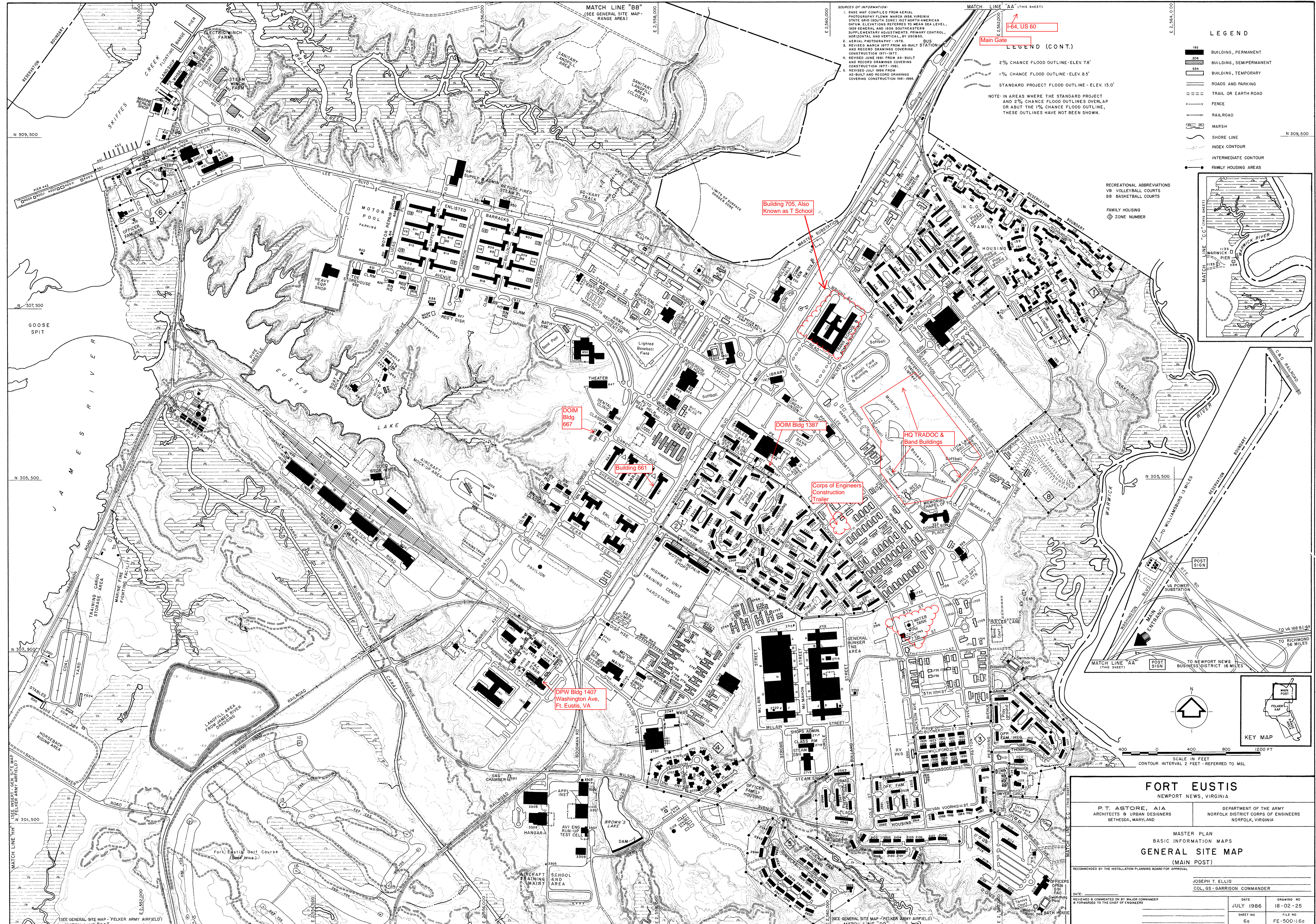
- All chassis joints securely fastened by screws, dowels, and fasteners. Adjustable floor levelers standard. Modesty panels to be full height and $\frac{3}{4}$ " min. thick with vertical grain direction. End panels and support panels to be 1-1/16" min. thick.
- Worksurfaces to be 1-3/16" min. thick. Edge options to include hardwood with multiple profiles. Veneer worksurfaces to be 1-3/16" min. slipmatched or bookmatched. Wood rims to be shaped on all sides with one of available profile options.
- File drawers to be equipped with full extension, progressive action slides and filing hardware to accommodate various filing requirements. Box drawers to be equipped with $\frac{3}{4}$ extension slides with ball bearing rollers.

ATTACHMENT A

- Precision steel ball bearings combined with sequence slide movement to ensure long lasting operation.
- Wood and laminate drawers to feature five-sided construction. Sides, backs, and fronts to be ½" min. thick veneer, laminate, or woodgrain vinyl wrapped. Drawer fronts to be three-ply construction with matched woodgrain.
 - Locking to be standard in all pedestals, wall mount cabinets, storage units and wardrobe units. Locks are independent, face mounted and cores are removable. Units are randomly keyed as standard.
 - Adjustable leveling glides on all floor standing components.

Warranty

- Lifetime to be free from defects in workmanship given normal use and care. Ten years on wood veneers and laminates; five years on electrical components and polymer based components; lifetime on drawer suspensions.



MATCH LINE "BB" (SEE GENERAL SITE MAP - RANGE AREA)

MATCH LINE "AA" (THIS SHEET)

1-64, US 60

Building 705. Also Known as T School

DOIM Bldg 667

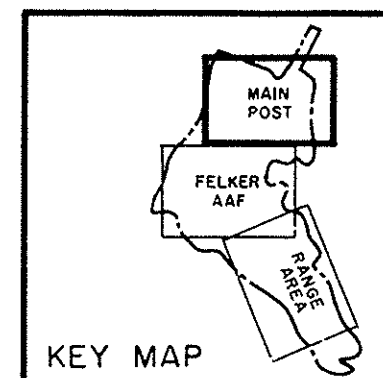
DOIM Bldg 1387

HO TRADOC & Band Buildings

Building 681

Corps of Engineers Construction Trailer

DPW Bldg 1407 Washington Ave. Ft. Eustis, VA



FORT EUSTIS
NEWPORT NEWS, VIRGINIA

P. T. ASTORE, AIA
ARCHITECTS & URBAN DESIGNERS
BETHESDA, MARYLAND

DEPARTMENT OF THE ARMY
NORFOLK DISTRICT CORPS OF ENGINEERS
NORFOLK, VIRGINIA

MASTER PLAN
BASIC INFORMATION MAPS
GENERAL SITE MAP
(MAIN POST)

RECOMMENDED BY THE INSTALLATION PLANNING BOARD FOR APPROVAL

JOSEPH T. ELLIS
COL, GS - GARRISON COMMANDER

DATE: _____ REVIEWED & COMMENTED ON BY MAJOR COMMANDER & FORWARDED TO THE CHIEF OF ENGINEERS DATE: _____ DRAWING NO: 18-02-25 SHEET NO: 60 FILE NO: FE-500-160

Bldg 661 pre-Award Walk Thru

<u>NAME</u>	<u>Company</u>	<u>PH/FAX</u>	<u>EMAIL</u>
Kevin Hockaday	Joint Forces LLC	804-577-7341	k.hockaday@CurtisContracting.com
CARIBBEAN	BRECAID	330 881-3535	mken@pp@BRECAIDInc.com
DAVID DOWLER	TH MARSH CA Services	910-509-1252 910-409-2161 cell	drdowler@thmarsh.com
JERRY CLARK	J.W. CLARK ENTERPRISES, INC	757.825.1530 P	JClark@JWClark.com
Bruce Gibson	J.W. CLARK ENTERPRISES, INC	757.825.1530 P	bgibson@JWClark.com
BRAO BERRY	JOINT FORCES - LLC (757)	825-0425	bberry@AJSTEELCONSTRUCTORS.COM
ANALISA THOMPSON	ARRIBA	757-627-5684 / 625-0248	Athompson@ARRIBA.com
AL HARTLEY	ARRIBA	752-627-5684	AHartley@ARRIBA.com
Wm Schroeder	Sovereign Comm	757-397-0177	Wmschroeder@sovereigncomm.com
Mike Fee	Fees Electrical	757-397-0177	Feeelectrical@verizon.com
Wayne Gardner	All Season Contractors	757 965-3567	wgardner@allseasoncontractors.com
Kevin Blount	CDSI	Fax 459-8099, 459-2374	kevinb@cdsi-va.com
JOEY CATERBONE	Harbor Const	722-9823 / 722 9847	joeycaterbone@hcci1.com
HAROLD MOSS	TECH, INC	443-869-1764 499-6565	hmoss@TechnoCorp.com
TRACEY WALDEN	cm Noble Con	499-5445	tracywalden@cleanmastersinc.com
TOMMY PHELPS	WATEXO	466-1114 485 7480	mmorris@virtexco.com Tphelps@virtexco.com
LOUIS TERKINS	ECEP	804-353-6007 / 485 8730	Lterkins@ecfp.com
JUSTIN HAMM	M&E Contractors	804-353-6010	hammj@m-econtractors.com
JEFF CARR	Jeffrey Carr Corp	330-929-5210 5015	Jeffcarr@JCarrConstruction.com
KEN CORNWELL	Cox-Powell Corp.	757-644-9635	KCORNWELL@KORNSGROUP.COM
STANLEY MEELOD	ADIRA	757 673 0808	MLEEOD@ADIRACONSTRUCTION.COM
JEFF LANSFORD	CEC	757-882-8746	Jeff@CEC-VA.com
JIM DRIVER	WM Jordan	757-596-6341	JDriver@WMJordan.com
BILL FRIES	Codewoods Cpts	804-815-8892	BillFries@CodewoodsCptsInc.com
SCOTT GRESHAM	ECS	757-229-6677	SGresham@ecslimited.com
BILLY GRESHAM	E.T. Gresham CO	027-4583 / 025-7705	JBAILEY@ETGresham.com
DALL EDEGE	BUSINESS TECH	538-3320 / 538-1193	DEDEGE@BUSINESSTECHLINE.COM
AIMEE DOWDIE	Business Technologies	538-3320 / 538-1193	ADowdie@businesstechnical.com
CONRAD HAAS	Charlie Jones, Inc.	523 2411 / 523 6177	Conradh40@verizon.net
Brent Yager	Wanbridge Construction	804-715-9224	Brent.Yager@wanbridge.com
DETTI BATCHER	Harbor Mechanical	757 812-4166	dsbatch@cox.net
Joyce Oviatt	Cornerstone	757 587 2936	ceoviatt@aol.com

N	C	P	L
DICK CIFI/CI/FAH	CONSOLUTIONS	439-0892	RECI/CI/FAH@CONSOLUTIONS.COM
MICHAEL T. FIPPONER	YORK RIVER/NS	555-1180	MFIPPONER@YORKRIVERELECTRIC.COM
LEE GRIFFIN	"	"	lgriffin@yorkriverelectric.com
Jamie Vanek	"	"	jvanek@yorkriverelectric.com
MATT TIMBARKO	PATRIOT CONSTRUCTION	202-528-3000	MTIMBARKO@PATRIOT-CONST.CO
STEVE MILESKI	LEEBOR SERVICES	704-905-5988	STEVE@LEEBOR.COM
RICK SAVAGE	"	751-220-5577	RICK.SAVAGE@LEEBOR.COM
RICH MARANO	EDGEWATER CONSTRUCTION	757-410-3114	RMARANO@EDGEWATERCONST.COM
Jim Collins	"	"	jcollins@edgewaterconst.com
MARK DEPIETRO	GUERRERO BUILDERS	910-875-1109	MARKADEPIETRO@AOL.COM
JEFAISON	DAL CONSTRUCTION LLC	757-873-0406	pfm@vitericm.com
DANA SHIRLEY	DAL CONST LLC	757-873-0404	DSHIRLEY@VITERICM.COM
MIKE SHANNON	IES COMM.	757-424-5164	MIKE.SHANNON@IES-CO.COM
JOE MANTILLA	JAM CONST. SERV.	321-288-4736	JAMCONST@CFL-FL.COM
BRUCE STONE	MADC SERVICES	757- 224-6058	MADC SERVICES LLC @.COM
Eason Lewis	CSF Enterprises	757-262-2087	ELewis@CSFenterprisesinc.com
John Dalton	CSF Ent	757-262-2087	JDalton@CSFenterprisesinc.com
JOE Carrasquillo	INS Concepts	434-466-0055	l.sutherland@att.net
Jim Lupie	Global Webb	757-240-4597	Jim.Lupie@GlobalWebb.com
Ron Pusey	CSI/Goit Solutions	804-559-4274	Ron.pusey@CSISYSTEMS.NET
BILLY GEE	KENBRIDGE	434-676-8221	BILLY@KENBRIDGE.COM
Chris Goodbest	Abateco Serv	804-862-9820	Cgoodbest@MSN.COM
John Gilmore	PATRIOT CONST	240-216-7931	Jgilmore@PATRIOT-CONST.COM
Sam Walden	UNITED GENERAL	801-454-087	UNTERDACA@CONST.NET
Randy Grant	GROUP III	252-527-3333	rgrant@groupiii.com
Tom Spain	JAN Commercial Inc	757-872-8600	T.Spain@JanComm.com
Kim Smith	FOC	703-581-6292	Ksmith@FOC Global.com
JOHN WILLIAMS	OLD TOWNS	757-229-2581	jwilliams@kernergroup.com
John Trant	TST	757-469-6404	jtrant@tstvb.com
MARTY DYKES		757-321-0475	marty@mzelectric.hrcoxmail.com
John M. Turner		757-631-0234	jturner@jbdenny.com