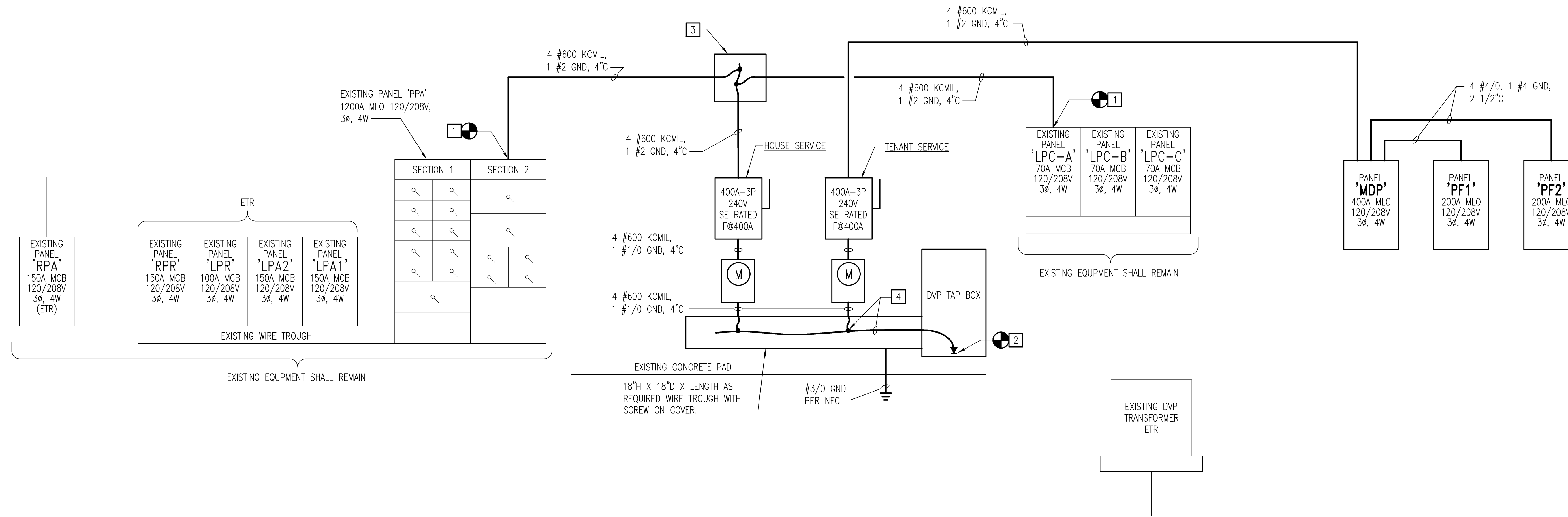


NOTES THIS SHEET

- 1 CONNECT NEW CONDUCTORS INDICATED TO TERMINAL LUGS ON EXISTING EQUIPMENT THAT SHALL REMAIN.
- 2 COORDINATE CONNECTION OF NEW SERVICE CONDUCTORS VIA EXISTING UNDERGROUND SERVICE CONDUIT TO TERMINALS OF SERVICE PULL BOX WITH DOMINION VIRGINIA POWER (DVP).
- 3 PROVIDE 32"x32"x16"D GALVANIZED PULL BOX WITH SCREW ON COVER AND SPLICE CONDUCTORS INDICATED PER NEC.
- 4 PROVIDE 4 SETS (4-600 KCML), 1 #3/0 GND. SPLICE SERVICE CONDUCTORS AS INDICATED PER NEC. COORDINATE SERVICE TAP BOX TERMINATION WITH DVP.



POWER RISER DIAGRAM – NEW WORK

NO SCALE

| PANELBOARD PF2 SCHEDULE | | | | | | | | | | | | |
|-------------------------------------|-------------|-----|-----|---------------|---------|-------|---------------|-------------|-----|---------------|-------------|--------------|
| SEE POWER RISER DIAGRAM FOR RATINGS | | | | | | | | | | | | |
| LOAD SERVED | LOAD (AMPS) | | | BKR TRIP | CKT NO. | PHASE | BKR TRIP | LOAD (AMPS) | | | LOAD SERVED | |
| | A | B | C | | | | | A | B | C | | |
| SPARE | | | | 20/1P | 1 | A | 2 | 20/1P | | | SPARE | |
| SPARE | | | | 20/1P | 3 | B | 4 | 20/1P | | | SPARE | |
| SPARE | | | | 20/1P | 5 | C | 6 | 20/1P | | | SPARE | |
| SPARE | | | | 20/1P | 7 | A | 8 | 20/1P | | | SPARE | |
| SPARE | | | | 20/1P | 9 | B | 10 | 20/1P | | | SPARE | |
| SPARE | | | | 20/1P | 11 | C | 12 | 20/1P | | | SPARE | |
| SPARE | | | | 20/1P | 13 | A | 14 | 20/1P | | | SPARE | |
| SPARE | | | | 20/1P | 15 | B | 16 | 20/1P | | | SPARE | |
| SPARE | | | | 20/1P | 17 | C | 18 | 20/1P | | | SPARE | |
| SPARE | | | | 20/1P | 19 | A | 20 | 20/1P | | | SPARE | |
| SPARE | | | | 20/1P | 21 | B | 22 | 20/1P | | | SPARE | |
| SPARE | | | | 20/1P | 23 | C | 24 | 20/1P | | | SPARE | |
| SPARE | | | | 20/1P | 25 | A | 26 | 20/1P | | | SPARE | |
| SPARE | | | | 20/1P | 27 | B | 28 | 20/1P | | | SPARE | |
| SPARE | | | | 20/1P | 29 | C | 30 | 20/1P | | | SPARE | |
| SPARE | | | | 20/1P | 31 | A | 32 | 20/1P | | | SPARE | |
| SPARE | | | | 20/1P | 33 | B | 34 | 20/1P | | | SPARE | |
| SPARE | | | | 20/1P | 35 | C | 36 | 20/1P | | | SPARE | |
| SPARE | | | | 20/1P | 37 | A | 38 | 20/1P | | | SPARE | |
| SPARE | | | | 20/1P | 39 | B | 40 | 20/1P | | | SPARE | |
| SPARE | | | | 20/1P | 41 | C | 42 | 20/1P | | | SPARE | |
| TOTAL | 0.0 | 0.0 | 0.0 | | | | | | 0.0 | 0.0 | 0.0 | TOTAL |
| TOTAL CONNECTED AMPS | | | | A: 0.0 | | | B: 0.0 | | | C: 0.0 | | |

| PANELBOARD MDP SCHEDULE | | | | | | | | | | | | |
|-------------------------------------|-------------|-------|-------|-----------------|---------|-------|-----------------|-------------|-------|-----------------|-------------|--------------------|
| SEE POWER RISER DIAGRAM FOR RATINGS | | | | | | | | | | | | |
| LOAD SERVED | LOAD (AMPS) | | | BKR TRIP | CKT NO. | PHASE | BKR TRIP | LOAD (AMPS) | | | LOAD SERVED | |
| | A | B | C | | | | | A | B | C | | |
| EXISTING RTU | 35.3 | | | 50/3P | 1 | A | 2 | 60/3P | 40.2 | | | RTU-3 |
| | | 35.3 | | | | B | | | 40.2 | | | |
| | | | 35.3 | | | C | | | 40.2 | | | |
| RTU-1 | 40.2 | | | 60/3P | 7 | A | 8 | 60/3P | 40.2 | | | RTU-4 |
| | | 40.2 | | | | B | | | 40.2 | | | |
| | | | 40.2 | | | C | | | 40.2 | | | |
| RTU-2 | 40.2 | | | 60/3P | 13 | A | 14 | 50/3P | 34.2 | | | RTU-5 |
| | | 40.2 | | | | B | | | 34.2 | | | |
| | | | 40.2 | | | C | | | 34.2 | | | |
| SPARE | | | | 20/1P | 19 | A | 20 | 20/1P | 6.0 | | | ROOF TOP RECEP.TS. |
| SPARE | | | | 20/1P | 21 | B | 22 | *20/1P | | | | DUCT SMK DETECTORS |
| SPARE | | | | 20/1P | 23 | C | 24 | 20/1P | | | | SPARE |
| SPARE | | | | 20/1P | 25 | A | 26 | 20/1P | | | | SPARE |
| SPARE | | | | 20/1P | 27 | B | 28 | 20/1P | | | | SPARE |
| SPARE | | | | 20/1P | 29 | C | 30 | 20/1P | | | | SPARE |
| SPARE | | | | 20/1P | 31 | A | 32 | 20/1P | | | | SPARE |
| SPARE | | | | 20/1P | 33 | B | 34 | 20/1P | | | | SPARE |
| SPARE | | | | 20/1P | 35 | C | 36 | 20/1P | | | | SPARE |
| PANEL PF1 | 37.2 | | | 200/3P | 37 | A | 38 | 200/3P | 0.0 | | | PANEL PF2 |
| | | 37.2 | | | | B | | | 0.0 | | | |
| | | | 24.8 | | | C | | | 0.0 | | | |
| TOTAL | 152.9 | 152.9 | 140.5 | | | | | | 120.6 | 119.6 | 114.6 | TOTAL |
| TOTAL CONNECTED AMPS | | | | A: 273.5 | | | B: 272.5 | | | C: 255.1 | | |

NOTES:
1. ASTERISK (*) INDICATES LOCKING BREAKER.

| ELECTRICAL LOAD SUMMARY | | | |
|-------------------------|-----------------|---------------|-----------------|
| LOAD DESCRIPTION | CONNECTED LOAD | DEMAND FACTOR | DEMAND LOAD |
| LIGHTING | 11.9 KVA | 100% | 11.9 KVA |
| RECEPTACLES | 0.7 KVA | NOTE - 1 | 0.7 KVA |
| AIR CONDITIONING | 82.9 KVA | 100% | 82.9 KVA |
| TOTAL | 96.1 KVA | | 95.9 KVA |

NOTES:
1. 1st 10 KVA @ 100%, REMAINDER @ 50%

FAULT CURRENT
PROVIDE PANELS WITH A SHORT CIRCUIT RATING OF 65 KAIC. CONTACT THE LOCAL POWER COMPANY PRIOR TO SUBMITTING SHOP DRAWINGS AND IF THE AVAILABLE FAULT CURRENT IS LESS THAN OR MORE THAN THIS AMOUNT, THEN NOTIFY THE OWNER IN WRITING & PROVIDE APPROPRIATE POWER EQUIPMENT.

| PANELBOARD PF1 SCHEDULE | | | | | | | | | | | | |
|-------------------------------------|-------------|------|------|----------------|---------|-------|----------------|-------------|-----|----------------|-------------|--------------|
| SEE POWER RISER DIAGRAM FOR RATINGS | | | | | | | | | | | | |
| LOAD SERVED | LOAD (AMPS) | | | BKR TRIP | CKT NO. | PHASE | BKR TRIP | LOAD (AMPS) | | | LOAD SERVED | |
| | A | B | C | | | | | A | B | C | | |
| LIGHTING | 12.4 | | | 20/1P | 1 | A | 2 | 20/1P | | | SPARE | |
| LIGHTING | | 12.4 | | 20/1P | 3 | B | 4 | 20/1P | | | SPARE | |
| LIGHTING | | | 12.4 | 20/1P | 5 | C | 6 | 20/1P | | | SPARE | |
| LIGHTING | 12.4 | | | 20/1P | 7 | A | 8 | 20/1P | | | SPARE | |
| LIGHTING | | 12.4 | | 20/1P | 9 | B | 10 | 20/1P | | | SPARE | |
| LIGHTING | | | 12.4 | 20/1P | 11 | C | 12 | 20/1P | | | SPARE | |
| LIGHTING | 12.4 | | | 20/1P | 13 | A | 14 | 20/1P | | | SPARE | |
| LIGHTING | | 12.4 | | 20/1P | 15 | B | 16 | 20/1P | | | SPARE | |
| SPARE | | | | 20/1P | 17 | C | 18 | 20/1P | | | SPARE | |
| SPARE | | | | 20/1P | 19 | A | 20 | 20/1P | | | SPARE | |
| SPARE | | | | 20/1P | 21 | B | 22 | 20/1P | | | SPARE | |
| SPARE | | | | 20/1P | 23 | C | 24 | 20/1P | | | SPARE | |
| SPARE | | | | 20/1P | 25 | A | 26 | 20/1P | | | SPARE | |
| SPARE | | | | 20/1P | 27 | B | 28 | 20/1P | | | SPARE | |
| SPARE | | | | 20/1P | 29 | C | 30 | 20/1P | | | SPARE | |
| SPARE | | | | 20/1P | 31 | A | 32 | 20/1P | | | SPARE | |
| SPARE | | | | 20/1P | 33 | B | 34 | 20/1P | | | SPARE | |
| SPARE | | | | 20/1P | 35 | C | 36 | 20/1P | | | SPARE | |
| SPARE | | | | 20/1P | 37 | A | 38 | 20/1P | | | SPARE | |
| SPARE | | | | 20/1P | 39 | B | 40 | 20/1P | | | SPARE | |
| SPARE | | | | 20/1P | 41 | C | 42 | 20/1P | | | SPARE | |
| TOTAL | 37.2 | 37.2 | 24.8 | | | | | | 0.0 | 0.0 | 0.0 | TOTAL |
| TOTAL CONNECTED AMPS | | | | A: 37.2 | | | B: 37.2 | | | C: 24.8 | | |

RISERS AND PANEL SCHEDULES

PROPOSED HEALTH CLUB

5813 WEST NORFOLK ROAD
PORTSMOUTH, VIRGINIA 23703-3324

ARCHITECT:
RANDOLPH T. HICKS, AIA
131 HANBURY ROAD, SUITE D
CHESAPEAKE, VIRGINIA 23322
PHONE: (757) 288-9354
FAX: (757) 366-9420
EMAIL: RandolphTH@aol.com

ISSUED FOR:
PRICING/CONSTRUCTION

DATE:
04-28-10

E4

